



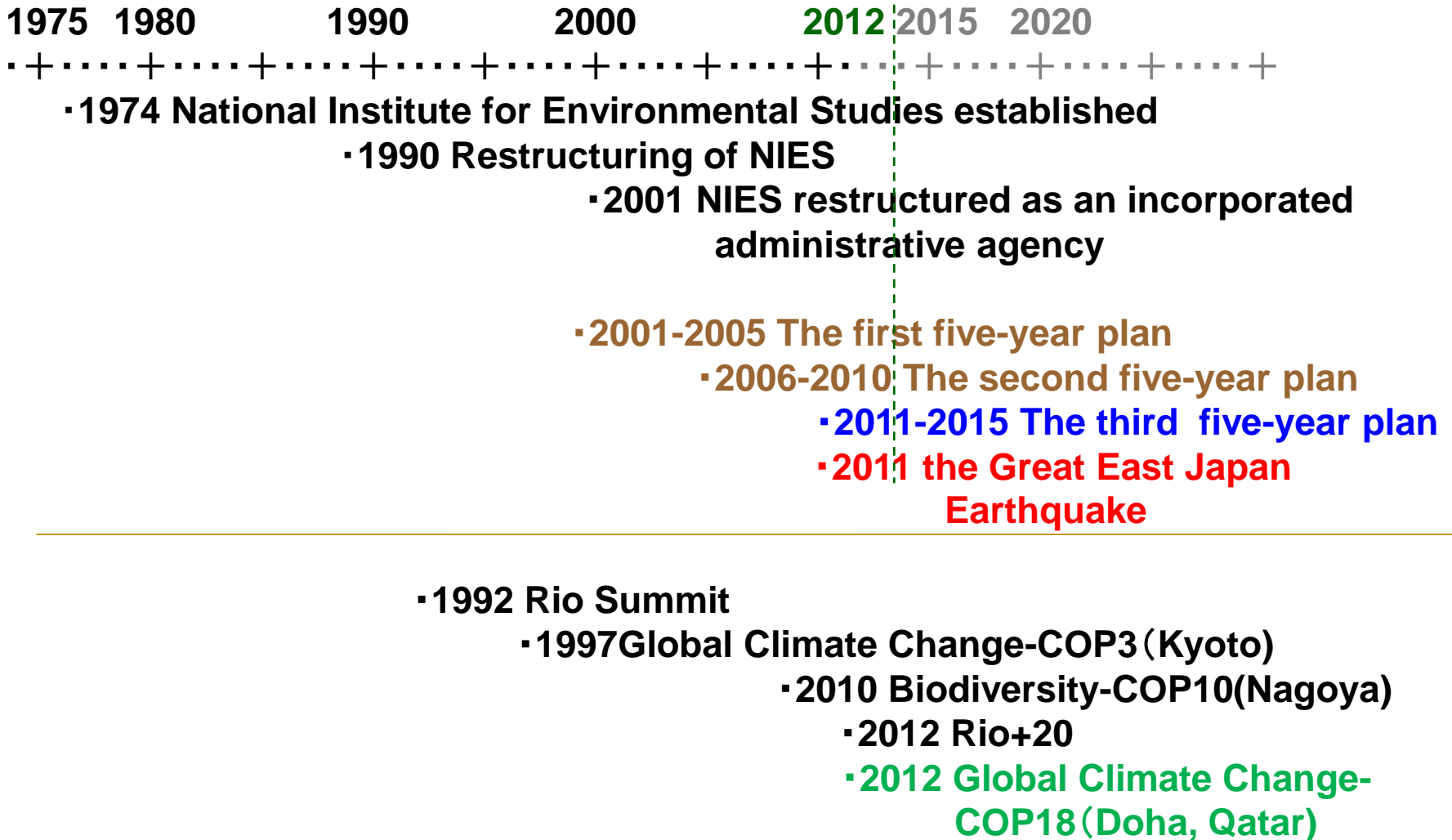
*“Low Carbon Actions in Asia”
- DOHA 2012, UNFCCC-COP18 -
30 Nov., 2012; Doha, Qatar*

Short Information on National Institute for Environmental Studies (NIES), JAPAN

Dr. Hideyuki SHIMIZU
Manager, International
Coordination Office
Planning Department
NIES



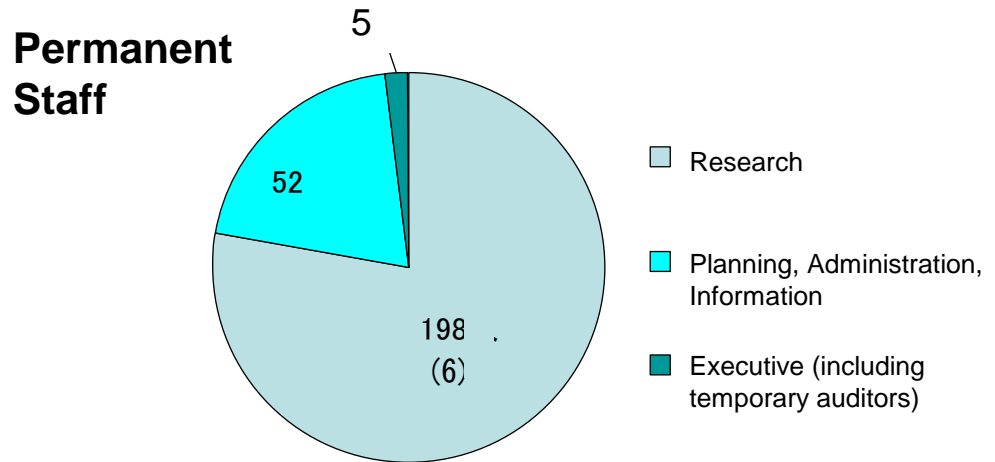
History of NIES



Human Resources: Permanent Staff and Researcher Specializations (current as of April 2012)

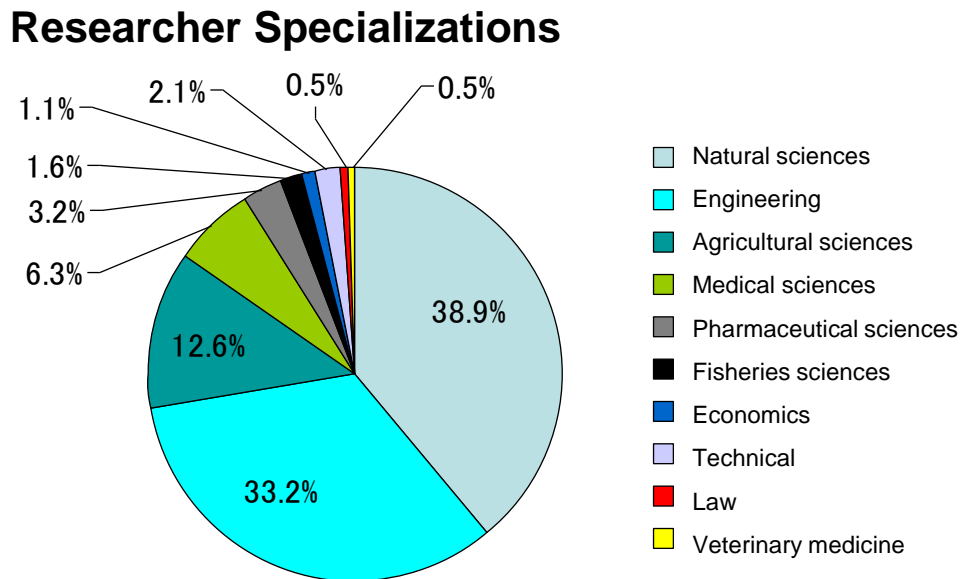
Permanent Staff 255 (6)

* Figures in brackets () indicate numbers of foreign staff



Researcher Specializations

Percentage of researchers holding doctorates
96.3%



Budget

(Unit: million yen)

Category	Amount (2012)
Revenues	
Operations Grants	12,111
Subsidies for facilities	263
Commissions revenues	3,611
Other revenues	54
Total	16,039
Expenditures	
Project costs	8,653
Facilities costs	263
Commissions expenses	3,611
Personnel expenses	3,026
General administrative costs	486
Total	16,039

Research Centers and Fields

**Center for Global
Environmental
Research**

**Global
Environment**

**Center for Material
Cycles and Waste
Management**

**Material Cycles
and
Waste Management**

**Center for
Environmental Risk
Research**

**Environmental
Risk**

**Center for Regional
Environmental
Research**

**Regional
Environment**

**Center for
Environmental
Biology and
Ecosystem Studies**

**Environmental
Biology
and
Ecosystem**

**Center for
Environmental Health
Sciences**

**Environmental
Health**

**Center for Social and
Environmental
Systems Research**

**Social
and
Environmental
Systems**

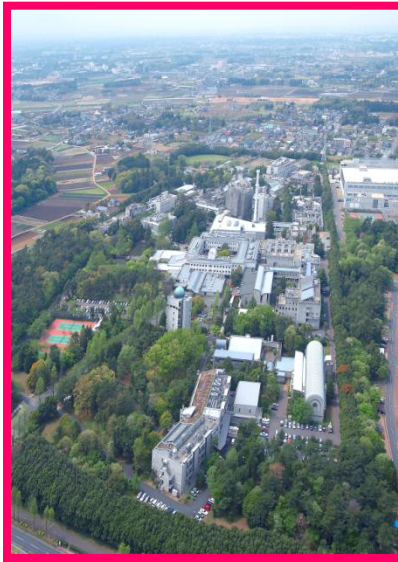
**Center for
Environmental
Measurement and
Analysis**

**Environmental
Measurement
and
Analysis**

NIES Research Facilities



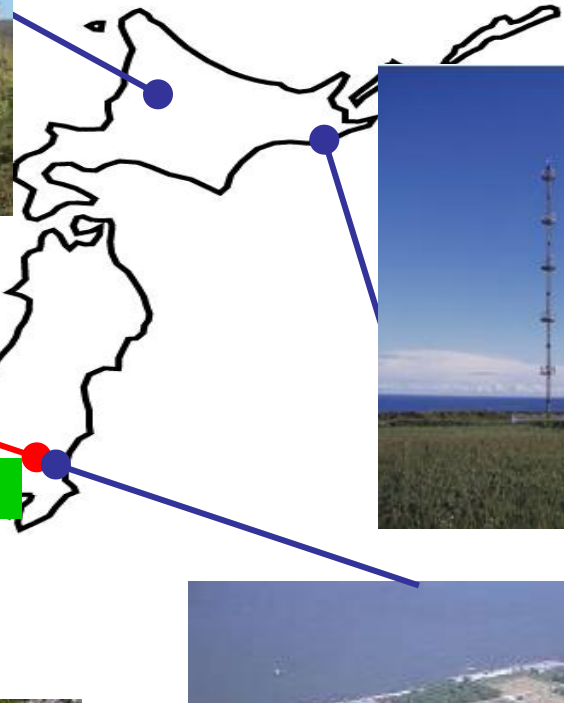
Cape Hedo
(Transboundary air)



NIES (main campus)



Teshio
(CO₂ Flux)



Cape Ochi-Ishi
(GHGs)



Tokyo



Hateruma
(GHGs)

Mt. Fuji
(CO₂ Flux)



Lake Kasumigaura
(lake environment)