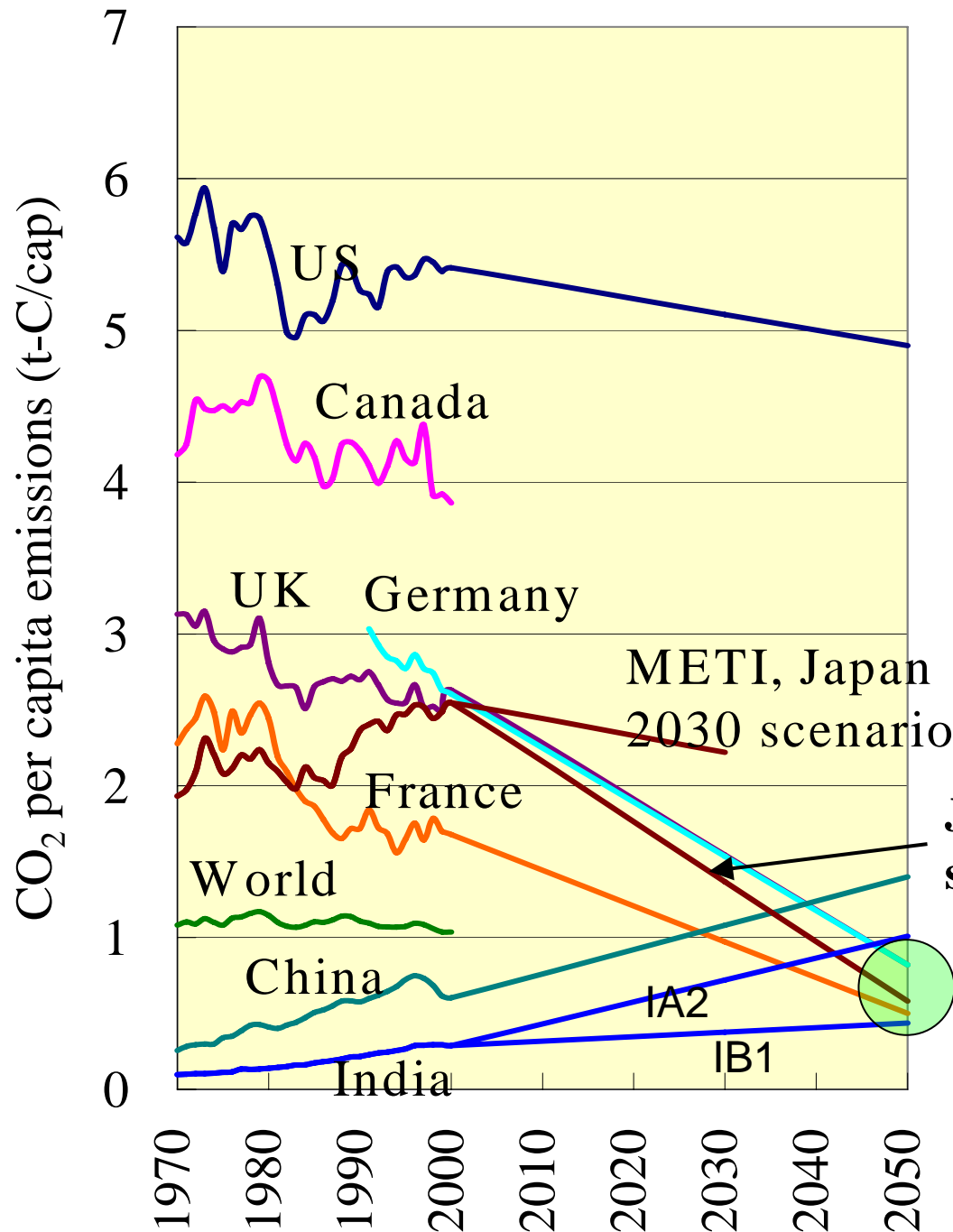


# Current per capita CO<sub>2</sub> emissions and Target



Japan 2050 scenario

Target for Low Carbon Economy

# Key messages

1. “Low carbon economy (LCE) is necessary to stabilize climate change.”
2. “There is no single bullet. International cooperation is necessary to realize global LCE.”
3. “Aligning sustainable development & climate change actions can reduce the burden and facilitate transition to stabilization. LCE is technologically and economically feasible.”