

Approaches to sensitive LCS sectors and NGO role

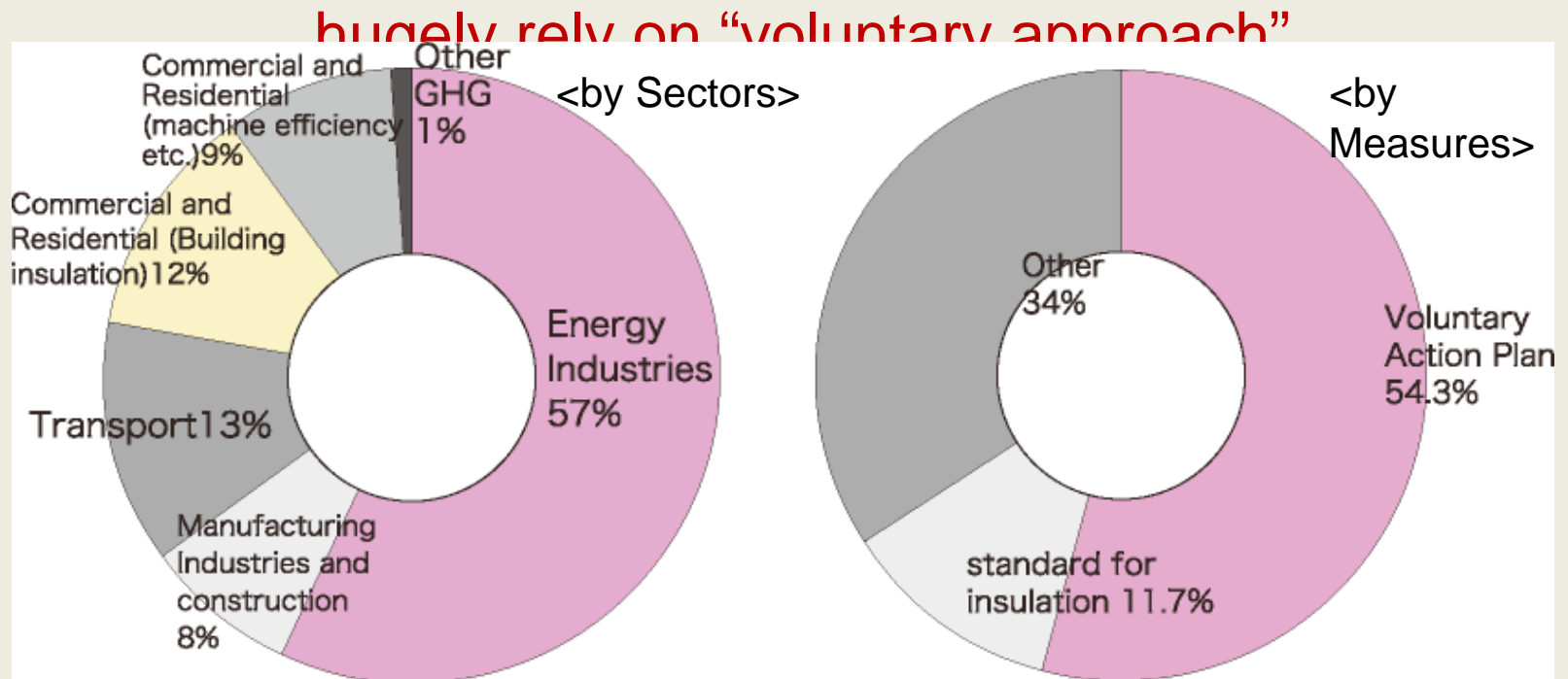
Kimiko Hirata

Kiko Network, Japan

khirata@kikonet.org

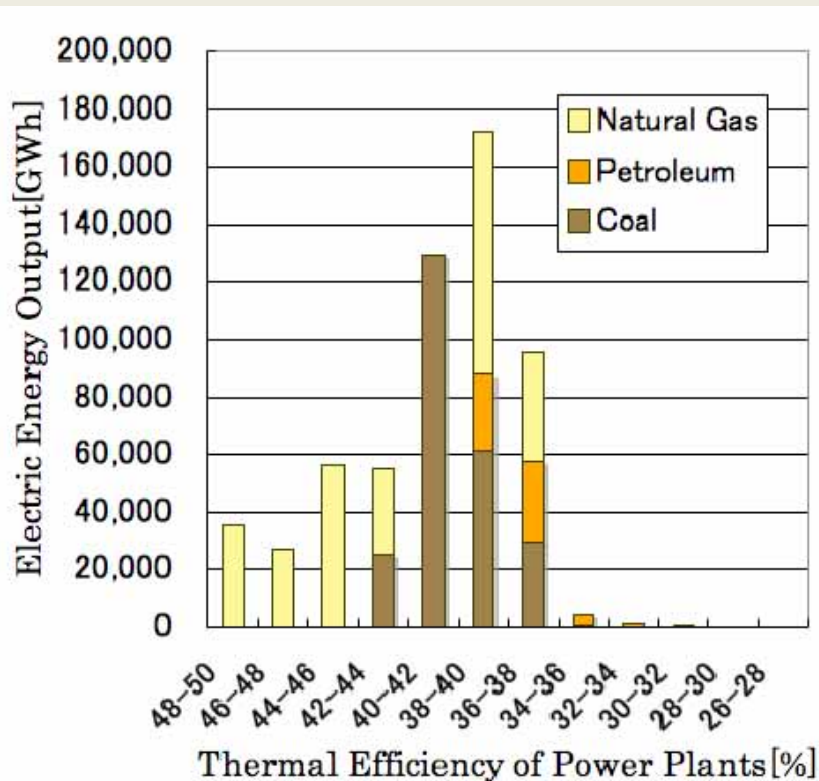
Japan's problem

- Japan's policy doesn't approach to sensitive LCS sectors

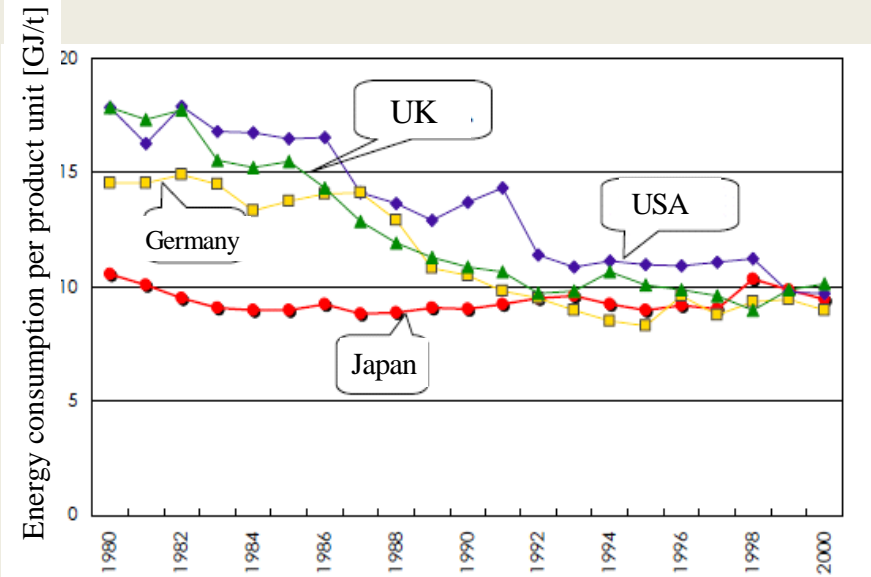


Large Reduction Potentials in energy/industry sectors

- Energy efficiency varies facilities to facilities
- Energy efficiency is **not** “NO1 in the world” anymore



Distribution of Energy Efficiency of Each Power Plant
Source: Kiko Network



International Comparison of Energy Consumption per unit in the Steel Industry

Source: Ministry of the Environment “Trends and Background of Greenhouse Gas Emissions in Japan”

Barriers and opportunities

- “Industrial structure change (ISC)” is inevitable toward LCS
- ISC makes heavy industry (steel, cement) and energy conversion (power, oil) sectors difficult to continue current business
- encourage these sectors to make the best effort to improve energy efficiency, as well as diversification of business
- **“Pricing carbon”** is important signal to realize these shift
 - **environmental tax and fiscal reform/carbon tax**
 - **auctions under ETS**

Role of NGO

- NGO role is significant
 - Function being “WATCHDOG”
 - Watch and analyze government’s policy
 - Propose better alternatives
 - Pressure to override vested interests
 - Serious condition of Japanese NGOs
 - Lack of funding, support, and human resources
 - Empowering NGO is key to Japanese society